

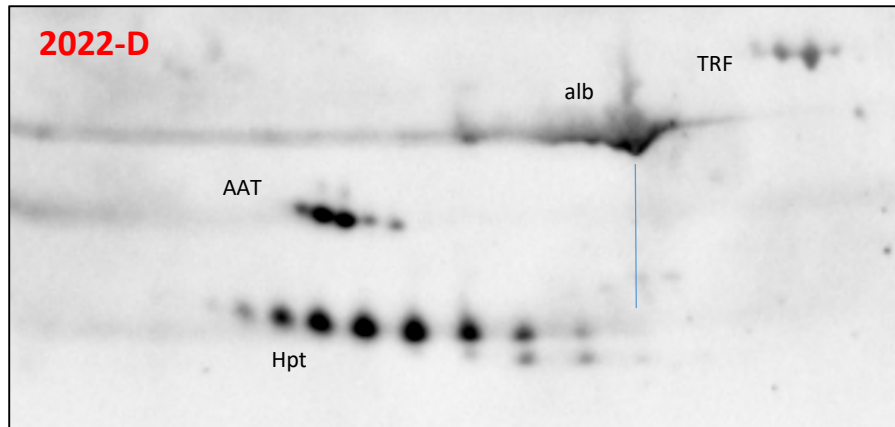
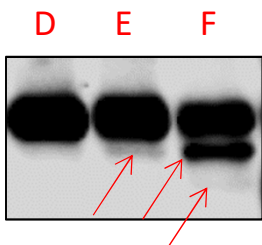
**ERNDIM CDG-PP-2022 D/E/F**  
 Lab412 (Bichat hospital, Paris, France)

2D electrophoresis

AAT= alpha-1-antitrypsin  
 Hpt = haptoglobin  
 Alb = albumin  
 (non-glycosylated).

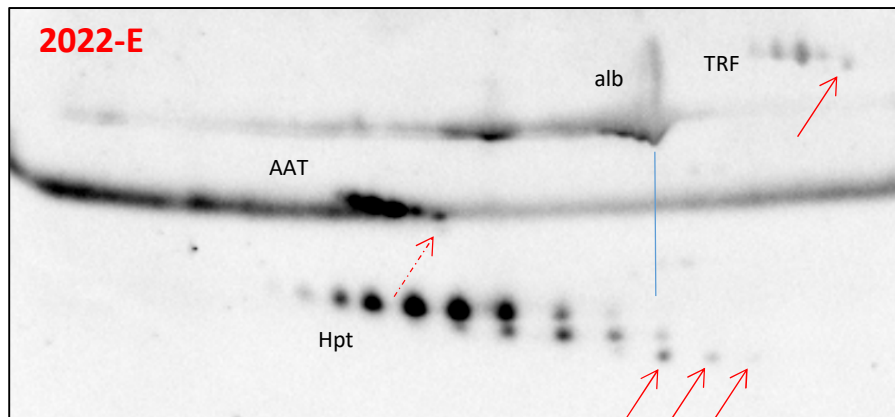
→ Type1

Western-blot of AAT



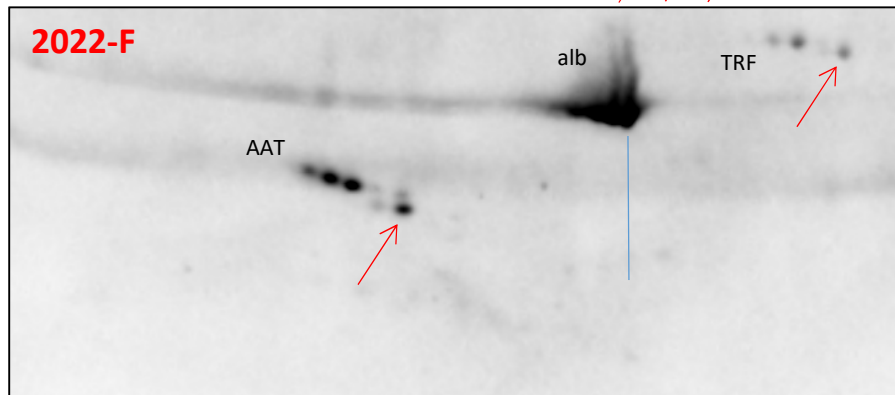
F, 19 years, Liver fibrosis, increased transaminases

Normal 2D pattern  
Not suggestive for CDG



M, 4 months, hypoglycaemia, hepatomegaly, proximal tubulopathy.

CDG type 1 abnormalities on AAT, Hpt and Trf.  
Suggestive for CDG-1



M, 16 years, intellectual disability, ataxia, low factor XI.

CDG type 1 abnormalities on AAT, and Trf. Undetectable Hpt.  
Suggestive for CDG-1