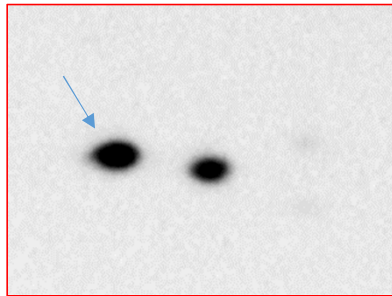
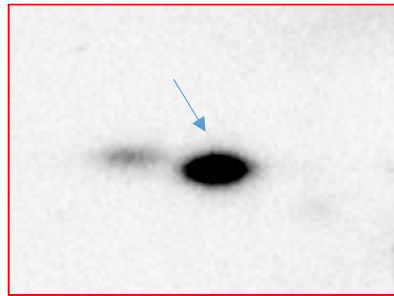


apoC-III-2



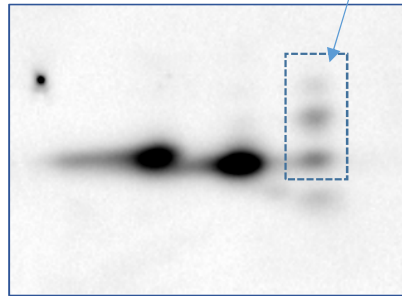
- Frequent in **intensive care**
- Liver diseases (sometime)
- Sialuria

apoC-III-1



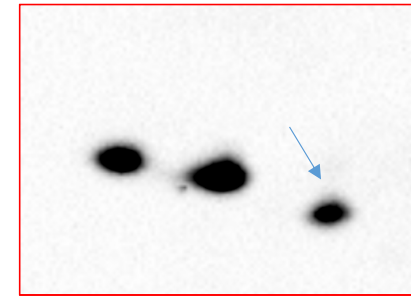
- **V-ATPase proton pump**
- **Obesity** (frequent)

Normal



- Normal**
(with *core2* glycoforms)

apoC-III-0



- **COG-CDG** (high specificity)
- **TMEM165-CDG**