

CDG-PP-2024-D:

M 3 years. Delayed speech and language development, seizure, Intellectual disability

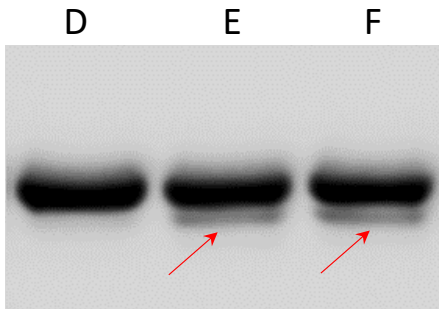
CDG-PP-2024-E:

F 40 years. Hypoalbuminemia, elevated hepatic transaminases, ataxia

CDG-PP-2024-F:

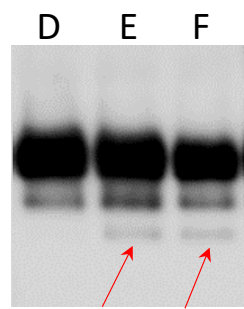
F 15 years. Hepatic fibrosis, kyphoscoliosis, peripheral neuropathy

Western-blot of Transferrin



normal CDG-I CDG-I

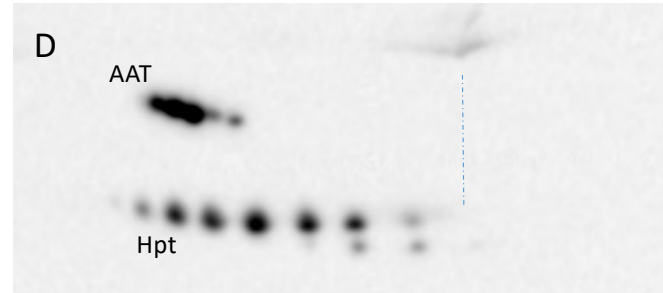
Western-blot of haptoglobin



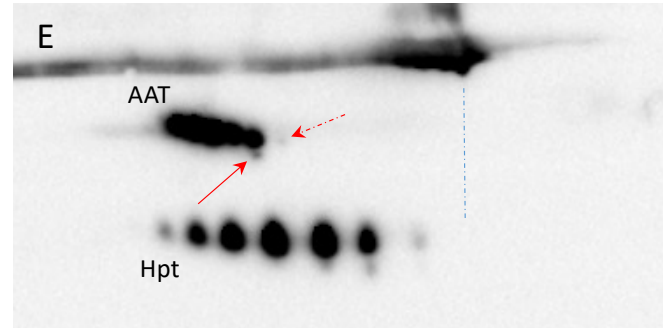
normal CDG-I CDG-I

For the sample E, the obtained profiles and the clinical context (40 y.o, elevated TA) are strongly evocative of chronic alcoholism or HFI

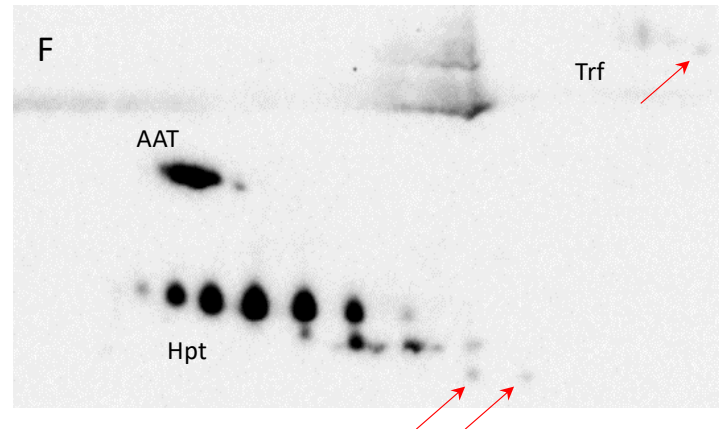
2DE profiles



Normal profile



CDG-I (+ CDG-II ?) abnormalities on AAT



CDG-I abnormalities on Hpt (and Trf)