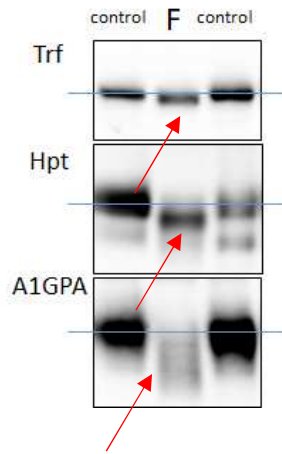




Résultats CQ CDG ERNDIM 2021
D-E-F

CQ ERNDIM CDG 2021-D

Western-blot: abnormal profile



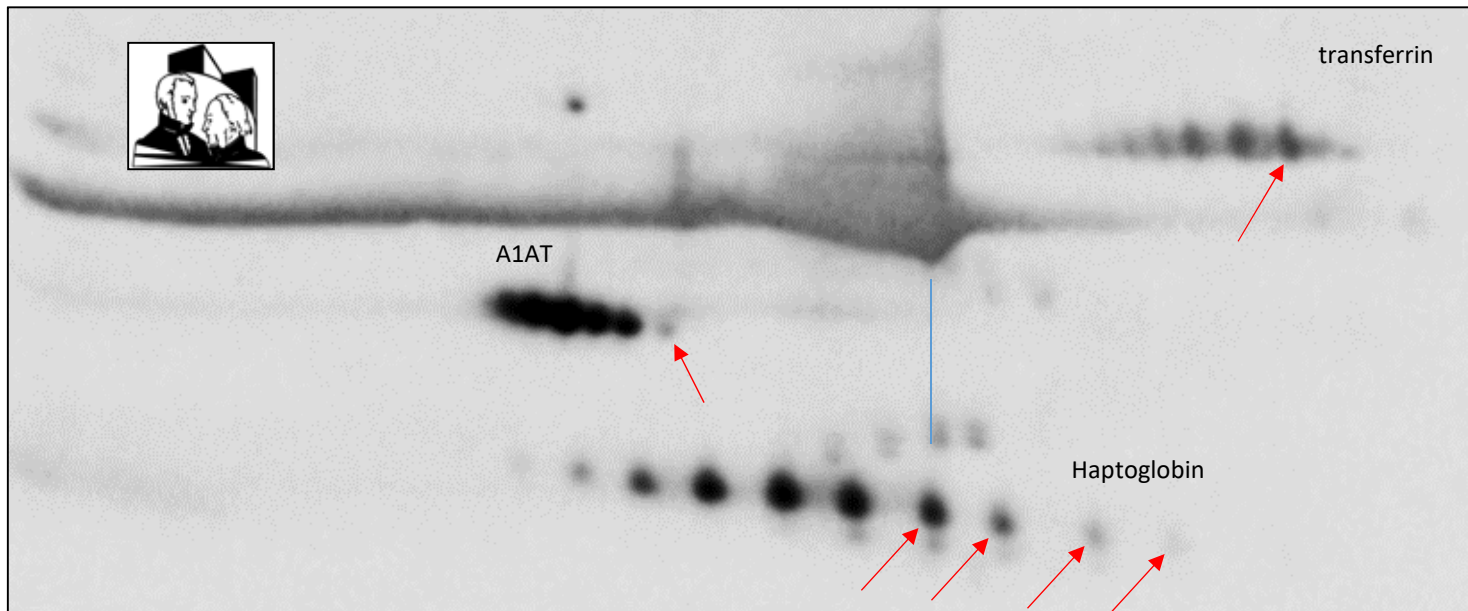
F, 20 yrs, type 1 diabetes, severe scoliosis and membranoproliferative glomerulonephritis. plasma/serum.

Suggestive for CDG-II with Golgi homeostasis defect (SLC37A4-CDG?)

apoC-III: abnormal profile (apoC-III1 + apoC-III0)



2D-electrophoresis: CDG-II profile

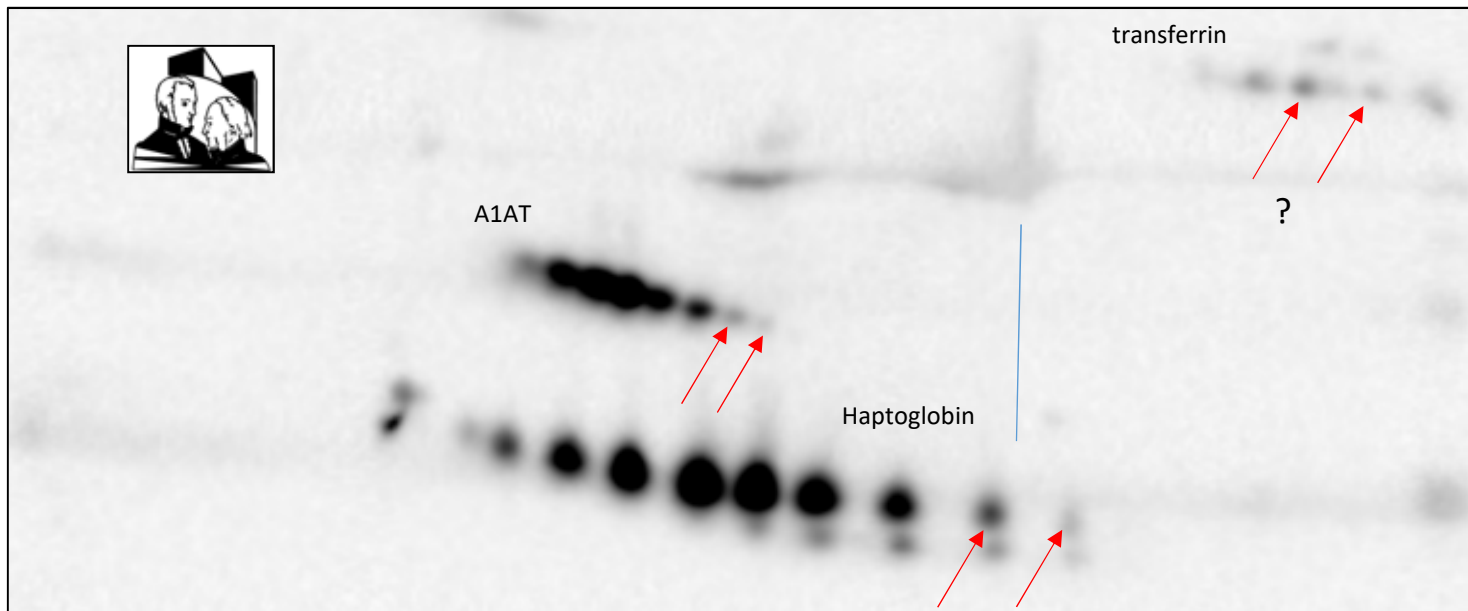


CQ ERNDIM CDG 2021-E

M, 21 yrs, growth deficiency, minor neurological involvement, minor facial dysmorphism. Plasma/serum

Suggestive for CDG-II

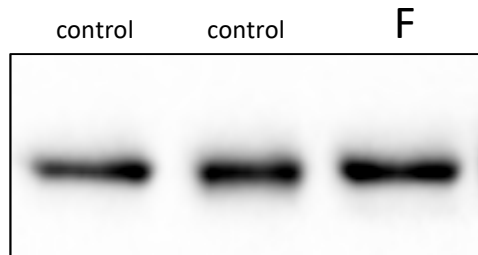
2D-electrophoresis: CDG-II profile



CQ ERNDIM CDG 2021-F

F, 10 yrs, cataract, dismorphic features, hepatomegaly. Plasma/serum.

Western-blot



Not suggestive for CDG

2D-electrophoresis: normal profile

